



1

---

---

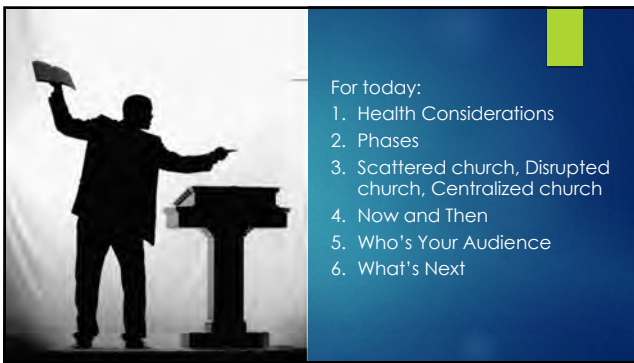
---

---

---

---

---



2

---

---

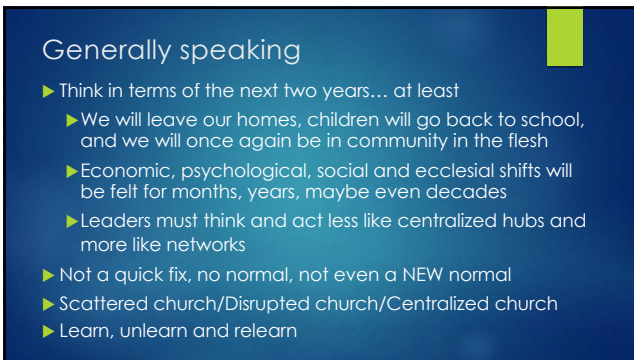
---

---

---

---

---



3

---

---

---

---

---

---

---

## To Open or Not to Open?

- ▶ Reopening requires declining cases for 14 days, the tracing of 90 percent of contacts, an end to health care worker infections, recuperation places and many other hard-to-reach goals
- ▶ **No one size fits all**
- ▶ The next two years will proceed in fits and starts
- ▶ Passion over polish
- ▶ Don't stop innovating

All decisions about implementing these strategies should be in collaboration with local health officials: they know the level of transmission in the community

4

---

---

---

---

---

---

---

---

---

---

## WE play an important role

- ▶ **slowing the spread of diseases, especially among high risk populations**
- ▶ often serve those who are most vulnerable/marginalized
- ▶ may include members and regular attendees and NOW people from the broader community

All decisions about implementing these strategies should be in collaboration with local health officials: they know the level of transmission in the community

5

---

---

---

---

---

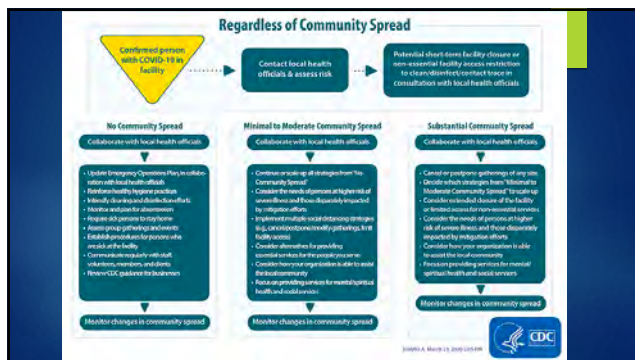
---

---

---

---

---



6

---

---

---

---

---

---

---

---

---

---

**When there is no community transmission (preparedness phase)**

- ▶ Plan and prepare, doing it now AND for future
- ▶ Review, update, and implement emergency operations plans (EOP). IF YOU DON'T HAVE ONE – THAT'S ANOTHER, LONGER CONVERSATION – NEED TO HAVE ONE
- ▶ Modify religious rites, rituals, and services, consulting with local health officials as needed
- ▶ Teach and reinforce healthy hygiene practices
- ▶ Intensify cleaning and disinfection efforts
- ▶ Establish procedures for persons who are sick at the facility

8

---

---

---

---

---

---

---

---

**When there is no community transmission (preparedness phase)**

- ▶ Monitor and plan for absenteeism. Require sick staff and volunteers to stay home
- ▶ Determine when to cancel or postpone non-essential gatherings and events
- ▶ Create and test communications for staff, volunteers, members, and the people you serve
- ▶ Review CDC's guidance for businesses and employers. IN YOUR AREA, LOCAL HEALTH OFFICIALS

9

---

---

---

---

---

---

---

---

**When there is minimal to moderate community transmission**

- ▶ Coordinate with local health officials
- ▶ Continue using strategies from the preparedness phase
- ▶ Implement multiple social distancing strategies
- ▶ Cancel or modify smaller gatherings
- ▶ Limit access to the facility by non-essential visitors
- ▶ Consider focusing your organization's efforts to provide services that are most needed during emergency

10

---

---

---

---

---

---

---

---

### When there is substantial community transmission

- ▶ Continue to coordinate with local health officials
- ▶ Cancel or postpone community and faith-based gatherings of any size
- ▶ Stay online, shelter in place
- ▶ Consider extended closure of the facility
- ▶ Consider how your organization is able to support the local community

---

---

---

---

---

---

---

---

11

### How do I decide?

- ▶ Every place is different
- ▶ Every town, country, state
- ▶ Demographics of population
- ▶ Look for two weeks of declining case counts, widespread availability of testing, contact tracing and no PPE shortages
- ▶ TEST, TRACE, & TRACK
- ▶ What does your local health department say

---

---

---

---

---

---

---

---

12

### Phase 1 – slow the spread

- ▶ IF ALL CRITERIA ARE MET
- ▶ Churches should continue holding online worship services only
- ▶ MAYBE a few in sanctuary to record
- ▶ Life rituals kept to less than 10
- ▶ Small groups continue meet online
- ▶ Keep office functions limited, ONLY essential operations (evaluate)
- ▶ Those in the office should be wearing masks




---

---

---

---

---

---

---

---

13

**Phase 1 – slow the spread**

- ▶ Continue Phase 1 evaluation
- ▶ Consider allowing building users back in
  - ▶ If able to observe gathering limits and distancing protocols
  - ▶ AND you're able to accommodate the cleaning needs
- ▶ Leadership teams less than 10 MIGHT consider meeting in person while wearing masks, maintaining social distancing
- ▶ High risk individuals should continue to shelter in place



14

---

---

---

---

---

---

---

---

**Phase 2 – slow shift**

- ▶ Churches over 50 attendance, continue online services, recording from home or the sanctuary with participation from small groups of people.
- ▶ Multiple services?
  - ▶ Plan for managing the number of people per service. Have a plan to clean surfaces between services.
- ▶ Small group worship as an alternative?
- ▶ Under 50 attendance consider holding in person worship – space is large enough for social distancing
  - ▶ Have a contingency plan for overflows beyond the approved number of people.



15

---

---

---

---

---

---

---

---

**Phase 2 – slow shift**

- ▶ Continue online as there are many at high risk and cannot join you or may not feel safe to return
- ▶ Wear cloth face masks while at church, as is recommended in public spaces - provide cloth face masks for attendees
- ▶ Singing is among the riskier behaviors when it comes to spreading droplets/aerosols which can carry
- ▶ No-touch alternatives for meet and greet, offering baskets, consider removing song books, bibles, bulletins, envelopes... EVERYTHING people TOUCH
- ▶ Distancing: spread out in sanctuary space with one family unit per pew; keep empty pews between families.
  - ▶ Meeting in a fellowship hall or outdoors if your space is small?
- ▶ Recommend against fellowship time after service.
- ▶ Life rituals could take place plans, in a more traditional way, with careful attention to guest lists so as to keep under the 50 person limit, and physical distancing



16

---

---

---

---

---

---

---

---



### Phase 2 – slow shift

#### ▶ Small Groups

- ▶ Offer opportunities small groups to meet in person or online.
- ▶ Maintain some online options for people who do not feel comfortable.
- ▶ Don't yet have small groups? This is an opportunity to renew relationships and perhaps start some.
- ▶ Trips, summer events should be canceled or postponed.
- ▶ Are there community services in need of volunteers? Practice the art of mission in place.
- ▶ Recommend not returning to YFM until the fall, at the earliest




---

---

---

---

---

---

---

---

17

### Phase 2 – slow shift

#### ▶ Church Business

- ▶ Regular office functions could resume more or less safely while maintaining social distancing and wearing masks.
- ▶ Continue to attend to cleaning and sanitizing the office. Pay particular attention to high-touch surfaces and cleaning hands after dealing with the offering.
- ▶ Church councils and leadership teams of less than 10 might consider meeting in person while wearing masks and maintaining social distancing.
- ▶ Smaller churches (under 50 members) could consider holding in-person membership meetings if official business is required.
- ▶ Allow building users/renters to resume operations, with a plan to address cleaning needs and agreement to observe gathering and distancing protocols.




---

---

---

---

---

---

---

---

18

### Phase 2 – slow shift

#### ▶ General Building

- ▶ Post signs indicating symptoms and urging people to stay home/seek medical attention if they have symptoms.
- ▶ Maintain a good stock of tissue, soap, hand sanitizer and disposable paper towels for drying hands.
- ▶ Clean the building regularly and between user groups, paying extra attention to high-touch surfaces.
- ▶ If you become aware of someone in the church or a building user infected with COVID-19, put your communication plan into action, and cooperate fully with contact tracers.
- ▶ High risk individuals whether staff, volunteers, or program participants, should continue to shelter in place.
- ▶ Keep a log of every person who enters
- ▶ Get names of every attendee, track and trace




---

---

---

---

---

---


---

---

19

**Phase 3 - depends**

- ▶ Based on a re-evaluation of the situation using the original criteria
- ▶ You might expect several more weeks of improving conditions to pass before this shift
- ▶ Progress will not necessarily be linear
- ▶ encouraging careful hygiene, following of the physical/social distancing recommendations
- ▶ recommend that churches of all sizes offer in-person and remote/online options.
- ▶ Physical distancing not necessarily required, avoid crowding



20

---

---

---

---

---

---

---

---

**Phase 3 - depends**

- ▶ Watch for public health recommendations, especially on group singing
- ▶ Continue to use no-touch alternatives
- ▶ It should be safer for small groups to meet in person. Recommend maintaining some online options for high risk individuals and those who do not feel comfortable being in public.
- ▶ Office functions could resume as normal, with attention to cleaning.
- ▶ Groups, teams, and committees could meet in person
- ▶ Keep a log of every person who enters
- ▶ Get names of every attendee, track and trace



21

---

---

---

---

---

---

---

---



To Open Or Not To Open:  
After the Medical



Scattered church  
Disrupted church  
Centralized church

**PART 2: NOW WHAT?**

22

---

---

---

---

---

---

---

---